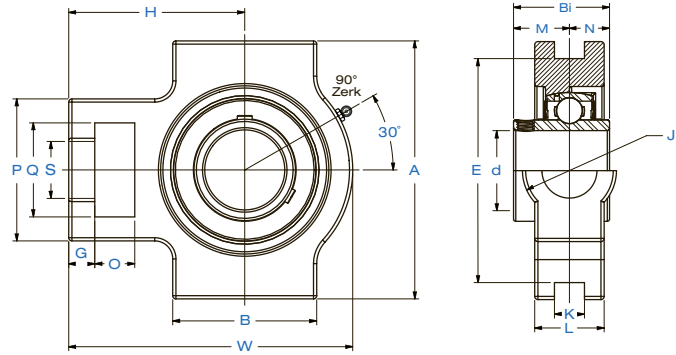
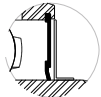


SUCSTM 200

Normal-Duty Take-Up Unit
Setscrew Lock



Seal
Styles



Standard Seal
with Flinger



Triple-Lip
L3 Seal

Bearing Number	Shaft Dia.	Dimensions in. mm.															Load Rating		Bearing Insert	Housing Number	Wt. lbs. kg.			
	d in. mm.	O	G	P	Q	S	B	K	E	A	W	J	L	H	Bi	N	M	Dynamic Cr				Static Cor		
SUCSTM 201	12																				SUC 201	STM 204	2.0 0.9	
SUCSTM 201-8	1/2																				SUC 201-8			
SUCSTM 202	15																				SUC 202			
SUCSTM 202-10	5/8	0.63	0.38	2.00	1.25	0.75	2.00	0.53	3.00	3.50	3.70	1.25	0.83	2.40	1.2205	0.5000	0.7205	2,331	1,142					
SUCSTM 203	17	16.0	10.0	51.0	32.0	19.0	51.0	13.5	76.0	89.0	94.0	32.0	21.0	61.0	31.0	12.7	18.3	10.37	5.08					
SUCSTM 204-12	3/4																				SUC 204-12			
SUCSTM 204	20																					SUC 204		
SUCSTM 205-14	7/8																					SUC 205-14	STM 205	2.2 1.0
SUCSTM 205-15	15/16	0.63	0.38	2.00	1.25	0.75	2.00	0.53	3.00	3.50	3.82	1.25	0.94	2.44	1.3425	0.5630	0.7795	2,542	1,349					
SUCSTM 205	25	16.0	10.0	51.0	32.0	19.0	51.0	13.5	76.0	89.0	97.0	32.0	24.0	62.0	34.1	14.3	19.8	11.31	6.00					
SUCSTM 205-16	1																					SUC 205-16		
SUCSTM 206-17	1 1/16																					SUC 206-17	STM 206	3.2 1.5
SUCSTM 206-18	1 1/8	0.63	0.44	2.20	1.46	0.87	2.25	0.53	3.50	4.02	4.45	1.46	1.10	2.75	1.5000	0.6260	0.8740	3,554	1,942					
SUCSTM 206	30	16.0	11.0	56.0	37.0	22.0	57.0	13.5	89.0	102.0	113.0	37.0	28.0	70.0	38.1	15.9	22.2	15.81	8.64					
SUCSTM 206-19	1 3/16																					SUC 206-19		
SUCSTM 206-20	1 1/4																					SUC 206-20		
SUCSTM 207-20	1 1/4																					SUC 207-20		
SUCSTM 207-21	1 5/16	0.63	0.56	2.52	1.46	0.87	2.52	0.53	3.50	4.02	5.12	1.46	1.18	3.07	1.6890	0.6890	1.0000	4,683	2,626					
SUCSTM 207-22	1 3/8	16.0	14.0	64.0	37.0	22.0	64.0	13.1	89.0	102.0	130.0	37.0	30.0	78.0	42.9	17.5	25.4	20.83	11.68					
SUCSTM 207	35																					SUC 207		
SUCSTM 207-23	1 7/16																					SUC 207-23		
SUCSTM 208-24	1 1/2																					SUC 208-24	STM 208	5.9 2.7
SUCSTM 208-25	1 9/16	0.75	0.67	3.27	1.94	1.13	3.27	0.63	4.02	4.50	5.67	1.93	1.30	3.46	1.9370	0.7480	1.1890	5,294	3,057					
SUCSTM 208	40	19.0	17.0	83.0	49.0	29.0	83.0	16.0	102.0	114.0	144.0	49.0	33.0	88.0	49.2	19.0	30.2	23.55	13.60					
SUCSTM 209-26	1 5/8																					SUC 209-26	STM 209	6.6 3.0
SUCSTM 209-27	1 11/16	0.75	0.67	3.27	1.94	1.13	3.27	0.63	4.02	4.61	5.71	1.93	1.38	3.43	1.9370	0.7480	1.1890	5,923	3,507					
SUCSTM 209-28	1 3/4	19.0	17.0	83.0	49.0	29.0	83.0	16.0	102.0	117.0	145.0	49.0	35.0	87.0	49.2	19.0	30.2	26.35	15.60					
SUCSTM 209	45																					SUC 209		
SUCSTM 210-30	1 7/8																					SUC 210-30	STM 210	6.6 3.0
SUCSTM 210-31	1 15/16	0.75	0.67	3.27	1.94	1.13	3.39	0.63	4.02	4.61	5.91	1.93	1.46	3.54	2.0315	0.7480	1.2835	6,402	4,046					
SUCSTM 210	50	19.0	17.0	83.0	49.0	29.0	86.0	16.0	102.0	117.0	150.0	49.0	37.0	90.0	51.6	19.0	32.6	28.48	18.00					
SUCSTM 210-32	2																					SUC 210-32		
SUCSTM 211-32	2																					SUC 211-32	STM 211	9.9 4.5
SUCSTM 211-34	2 1/8	0.98	0.75	4.02	2.52	1.38	3.75	0.87	5.12	5.71	6.73	2.52	1.50	4.17	2.1890	0.8740	1.3150	7,931	5,036					
SUCSTM 211	55	25.0	19.0	102.0	64.0	35.0	95.0	22.0	130.0	145.0	171.0	64.0	38.0	106.0	55.6	22.2	33.4	35.28	22.40					
SUCSTM 211-35	2 3/16																					SUC 211-35		
SUCSTM 212-36	2 1/4																					SUC 212-36	STM 212	12.3 5.6
SUCSTM 212	60	1.26	0.75	4.02	2.52	1.38	4.02	0.87	5.12	5.71	7.64	2.52	1.65	4.69	2.5630	1.0000	1.5630	9,554	5,921					
SUCSTM 212-38	2 3/8	32.0	19.0	102.0	64.0	35.0	102.0	22.0	130.0	145.0	194.0	64.0	42.0	119.0	65.1	25.4	39.7	42.50	26.34					
SUCSTM 212-39	2 7/16																					SUC 212-39		

MARINER®